

marvel[®] Tech



WE ARE
LIGHTING
YOUR LIFE

2023
CATALOGUE

Welcome to



products

C a t a l o g u e



marvel[®] Tech

**YOUR
BEST
CHOICE**



ABOUT US

Marvel is a company established in 2019 by specialized engineers.

Our team members are professional electrical engineers, licensed electricians, passionate system designers, and the most caring installers.

It is an elite competitor in energy systems and alternative power solutions.

In addition, it has many branches worldwide.

Marvel produces its products in top-level factories around the globe. It produces batteries of all kinds and solar panels alongside inverters; the power is stored in batteries such as lithium, gel, and acid batteries, which are all made to provide optimum performance.

Our products are manufactured in the best Factories in China, Vietnam, Korea, and India such as Exide, Ritar, Voltronic, and Delkor.

What makes Marvel unique is its compatibility with international criteria and its quality certificates.

In Marvel, it's all about customer satisfaction. It's an excellent experience for everyone: the representative, the customer, and the company.

Let's make the future safer and cleaner together.

- ▶ Marvel Products are manufactured in the best international Factories .
- ▶ A wide range of Products types, suitable for all needs.
- ▶ Available in all capacities from 7Ah to 230Ah.
- ▶ Real warranty on all types of Products.

Why?
marvel●



PRODUCTS

Batteries:

MD

Lead Acid Deep Cycle

MR

Lead acid Battery

MG

Hyper Gel Battery

MPG

Pure Gel Battery

DZM - DZF

E-Bike Lead acid Battery & E-Bike Gel Battery

MTU

Tubular Battery

Maintenance Free Car Battery

Dry Car Battery

ML

Lithium Batteries

Inverters:

Solar Inverters:

High Frequency Inverter

HF Inverter MIS series

Low Frequency Inverter

3-Phase Inverter

Pump Inverter

Power Inverter

Chargers:

AC Power Charger

Solar Charge Controllers

Solar Panels

MONO

HJT

Voltage Regulators

Variable Frequency Drive (VFD)

Mini DC UPS

Solar Accessories:

- Solar Connector

- Circuit Breaker

- Surge Protective Device

- Fuse Link





marvel[®] Tech

 www.marvel-battery.com

MARVEL BATTERIES

▶ BATTERIES

MD

Lead Acid Deep Cycle

MR

Lead acid Battery

MG

Hyper Gel Battery

MPG

Pure Gel Battery

DZM - DZF

E-Bike Lead acid Battery & E-Bike Gel Battery

MTU

Tubular Battery

Maintenance Free Car Battery

Dry Car Battery

ML

Lithium Batteries



marvel[®]
Tech

marvel[®] Tech

BATTERIES

MTU

ML

CAR

MPG

MD

MR

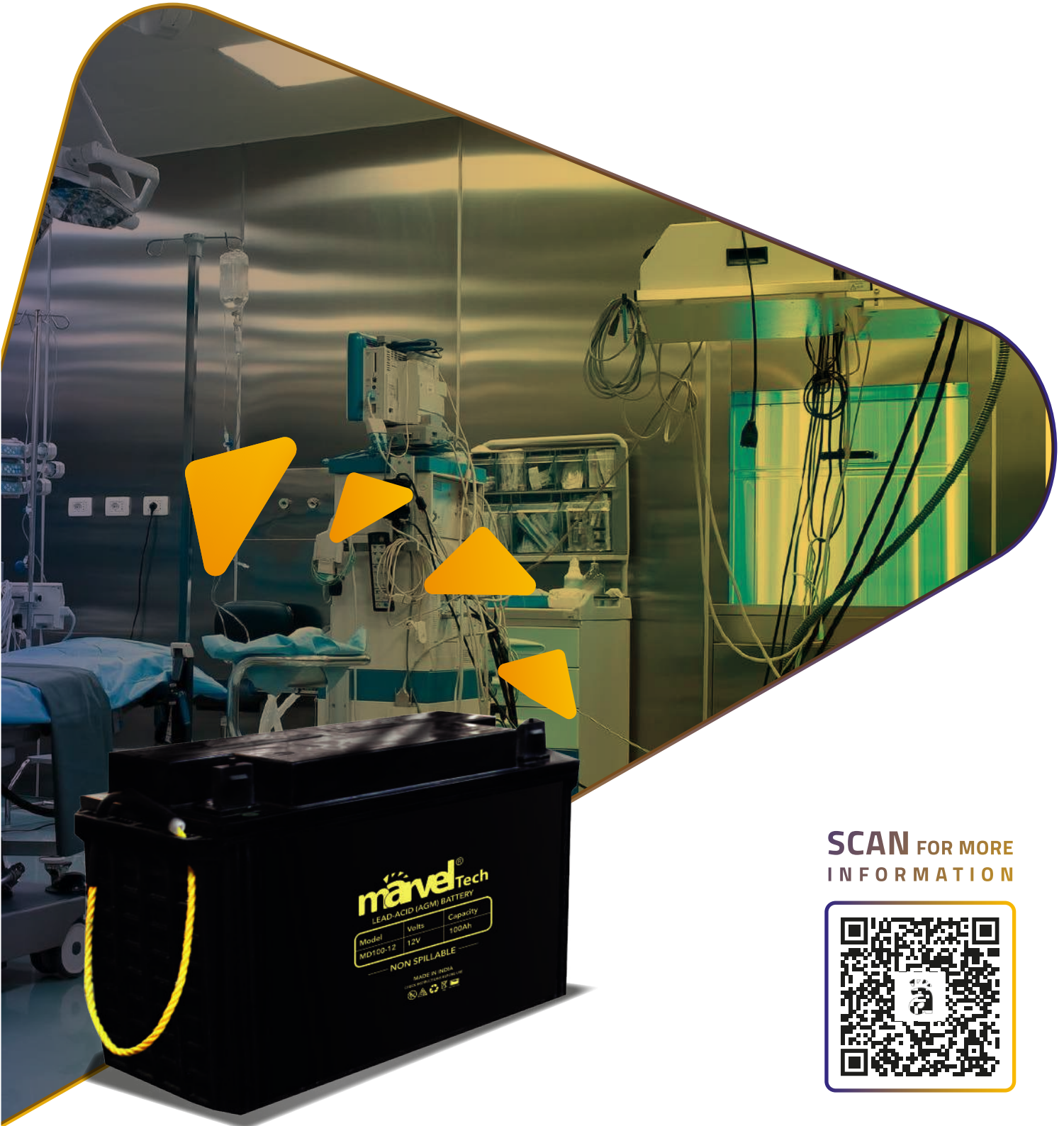
MTU
Premium

MG

DZF



MD



SCAN FOR MORE
INFORMATION



marvel[®] Tech
LEAD-ACID (AGM) BATTERY

Model	Volts	Capacity
MD100-12	12V	100Ah

NON SPILLABLE

MADE IN INDIA

MD

(Lead-Acid) Batteries

(Deep cycle), Thick poles and better performance by 30%,
uses: Solar power systems and medical equipments.



Products

MODEL	Warranty (months)	Made In	capacity	voltage	Approximate weight (kg)	terminal	Cycle life vs DOD%		
							30% DOD	50%DOD	100% DOD
MD-26 Premium by EXIDE (26AH)	12	India	26Ah	12	9.5	F3(M6)	2700	1200	400
MD-32 Premium by EXIDE (32AH)	12	India	32Ah	12	9.9	-	2700	1200	400
MD-42 Premium by EXIDE (42AH)	12	India	42Ah	12	13.9	F6(M5)	2700	1200	400
MD-55 Premium by EXIDE (55AH)	12	India	55Ah	12	19.2	F6(M5)	2700	1200	400
MD-65 Premium by EXIDE (65AH)	12	India	65Ah	12	20.2	-	2700	1200	400
MD-100 Premium by EXIDE (100AH)	12	India	100Ah	12	34.7	F9(M8)	2700	1200	400
MD-150 Premium by EXIDE (150AH)	12	India	150Ah	12	46.8	F9(M8)	2700	1200	400
MD-200 Premium by EXIDE (200AH)	12	India	200Ah	12	63.6	F8(M8)	2700	1200	
MD26-12 (26AH)	12	China	26Ah	12	8.1	F13(M5)/F3(M5)/F24(M5)	1600	600	300
MD33-12 (33AH)	12	China	33Ah	12	10.2	F7(M8)/F11(M6)	1600	600	300
MD40-12 (40AH)	12	China	40Ah	12	12.4	F4(M6)/F11(M6)	1600	600	300
MD55-12 (55AH)	12	China	55Ah	12	17.5	F15(M6)/F11(M6)	1600	600	300
MD65-12 (65AH)	12	China	65Ah	12	19.5	F5(M8)/F11(M6)	1600	600	300
MD80-12 (80AH)	12	China	80Ah	12	22.8	M8	1200	500	200

MR



SCAN FOR MORE
INFORMATION



MR

(Lead-Acid) Batteries

Lead-acid/AGM VRLA Battery.
Uses: UPS and monitoring systems.



Products

Product Name	Warranty (months)	Made In	capacity	voltage	Approximate weight (kg)	terminal	Cycle life vs DOD%		
							30% DOD	50%DOD	100% DOD
MR1.3 -12 (1.300AH)	12	Vietnam / China	1.3Ah	12	0.5	F187/F250	1200	700	200
MR4.5-6 (4.5AH)	12	Vietnam / China	4.5Ah	6	0.65	F1	1300	500	200
MR5-6 (5AH)	12	Vietnam / China	5Ah	6	0.8	F187	1200	700	200
MR5-12 (5AH)	12	Vietnam / China	5Ah	12	1.6	F1/F2	1300	500	200
MR7-6 (7AH)	12	Vietnam / China	7Ah	6	1	F1/F2	1300	500	200
MR7-12 (7AH)	12	Vietnam / China	7Ah	12	2	F1/F2	1300	500	200
MR8-12 (8AH)	12	Vietnam / China	8Ah	12	2.2	F1/F2	1300	500	200
MR9-12 (9AH)	12	Vietnam / China	9Ah	12	2.55	F1/F2	1300	500	200
MR12-12 (12AH)	12	Vietnam / China	12Ah	12	3.6	F1/F2	1300	500	200
MR18-12 (18AH)	12	Vietnam / China	18Ah	12	2.2	M6	1300	500	200
MR20-12 (20AH)	12	Vietnam / China	20Ah	12	5.4	F3(M5)/F13(M5)	1300	500	200

MG



SCAN FOR MORE
INFORMATION



Hyper Gel Batter

LEAD ACID (DEEP CYCLE) BATTERY.

Uses: Solar / wind energy, UPS/EPS and Power systems.



Products

Product Name	Warranty (months)	Made In	capacity	voltage	Approximate weight (kg)	terminal	Cycle life vs DOD%		
							30% DOD	50%DOD	100% DOD
MG5-12 (12AH)	12	Vietnam / China	5Ah	12	1.58	F187/F250	1100	700	250
MG6-12 (6AH)	12	Vietnam / China	6Ah	12	2	F187/F250	1500	800	350
MG8-12 (8AH)	12	Vietnam / China	8Ah	12	2.28	F187/F250	1200	700	300
MG9-12 (12AH)	12	Vietnam / China	9Ah	12	2.55	F250/F187	1500	800	350
MG20-12 (20AH)	12	Vietnam / China	20Ah	12	5.8	L1/M5	1500	800	400
MG26-12 (26AH)	12	Vietnam / China	26Ah	12	7.7	M5	1500	800	400
MG33-12 (33AH)	12	Vietnam / China	33Ah	12	10	M6	1500	800	350
MG40-12 (40AH)	12	Vietnam / China	40Ah	12	13.2	M6	1500	800	350
MG55-12 (55AH)	12	Vietnam / China	55Ah	12	16.5	M6	1500	800	350
MG80-12 (80AH)	12	Vietnam / China	80Ah	12	25	M6	1500	800	350
MG100-12 (100AH)	12	Vietnam / China	100Ah	12	30	F12(M8)/F5(M8)	1800	700	400
MG150-12 (150AH)	12	Vietnam / China	150Ah	12	44.5	F12(M8)/F5(M8)	1800	700	400
MG200-12 (200AH)	12	Vietnam / China	200Ah	12	59	F10(M8)/F16(M8)	2100	1050	350
MG225-12 (225AH)	12	Vietnam / China	225Ah	12	65	F10(M8)/F16(M8)	2100	1050	350

DZM-DZF



**SCAN FOR MORE
INFORMATION**



DZM - DZF

Electrical bike Battery

E-Bike Lead acid Battery & E-Bike Gel Battery



Products

Product Name	Warranty (months)	Made In	capacity	voltage	Approximate weight (kg)	terminal	Cycle life vs DOD%		
							30% DOD	50%DOD	100%
6-DZF-7 (7.5AH)	12	China	9Ah	12	2.25	F187/F250	1200	800	400
6-DZF-14 (16AH)	12	China	16Ah	12	4.5	M5	1400	1000	500
6-DZF-23 (29AH)	12	China	29Ah	12	7	M5	1400	1000	500
6-DZF-20.3 (25.6AH)	12	China	25Ah	12	6.15	M5	1200	800	400
6-EVF-32.3 (37.2AH)	12	China	38Ah	12	9.2	M5	1200	800	400
6-EVF-45.3 (52.3AH)	12	China	52Ah	12	12.8	M5	1200	800	400

(Lead-Acid) Batteries



SCAN FOR MORE
INFORMATION



Maintenance Free Car

& Dry Car Batteries



Products

Maintenance Free Car

model	Warranty (months)	Made In	capacity	voltage	Approximate weight (kg)	layout	CCA/SAE(A)	Dimensions L,W,H (mm)	layout
42B19L (35AH)	12	Korea	35Ah	12	9.6	layout 0	300	187*127*227	left
54459 (44AH)	12	Korea	44Ah	12	12.45	layout 0	400	205*174*188	left
55B24R (45AH)	12	Korea	45Ah	12	12.5	(+ -)	430	238*129*227	right
55B24L (45AH)	12	Korea	45Ah	12	12.5	(- +)	430	238*129*227	left
55B24LS (45AH)	12	Korea	45Ah	12	12.5	layout 0	430	238*129*227	left
50D20L (50AH)	12	Korea	50Ah	12	14.2	(+ -)	450	208*173*219	left
55559 (55AH)	12	Korea	55Ah	12	14.65	layout 0	525	241*174*188	left
55D26L (60AH)	12	Korea	60Ah	12	15.92	(+ -)	475	260*173*225	left
56638 (66AH)	12	Korea	66Ah	12	16	layout 0	540	277*174*188	left
65D31L (70AH)	12	Korea	70Ah	12	19.4	(+,-)	530	305*172*255	left
57412 (74AH)	12	Korea	74Ah	12	17.83	(+ -)	680	277*174*188	left
80D26L (75AH)	12	Korea	75Ah	12	18	layout 0	580	260*173*225	left
95D31R (80AH)	12	Korea	80Ah	12	19.8	(+,-)	620	305*172*225	right
105D31L (90AH)	12	Korea	90Ah	12	21.5	(- +)	680	305*172*255	left
105D31R (90AH)	12	Korea	90Ah	12	19.8	layout 0	680	305*172*225	right
95E41L (100AH)	12	Korea	100Ah	12	27.5	layout 0	750	406*172*231	left
1000-31 (100AH)	12	Korea	100Ah	12	26.3	center (BCI 18)	1000	330*173*239	Center
60044 (100AH)	12	Korea	100Ah	12	21	layout 0	810	352*174*189	Left
750-31 (100AH)	12	Korea	100Ah	12	24	center (BCI 18)	750	330*173*239	Center
115F51R (120AH)	12	Korea	120Ah	12	33.6	(- +)	800	505*185*234	Left
150G51R (150AH)	12	Korea	150Ah	12	40.2	layout 4	950	508*215*234	Left
200H52L (200AH)	12	Korea	200Ah	12	53	layout 5	1000	512*277*241	Right
200H52R (200AH)	12	Korea	200Ah	12	53	(- +)	1000	512*277*241	left
DIN55L (55AH)	12	Egypt	55Ah	12	14.44	0	470	241.5*175*188.4	left
DIN66L (66AH)	12	Egypt	66Ah	12	16.65	0	550	276*175*190.4	left
DIN72L (72AH)	12	Egypt	72Ah	12	17.6	0	600	276*175*190.4	left
TD100L MF (100Ah)	12	Egypt	100Ah	12	22.78	0	820	352*175*190.4	left
NS40ZL (36AH)	12	Egypt	36Ah	12	11	0	360	196*128*223	left
N90L (90AH)	12	Egypt	90Ah	12	23.1	0	860	305*172.5*220.5	left

Dry Car Batteries

N100 (100AH)	12	India	100Ah	12	30.69	0	850	419*180*285	left
N150 (150AH)	12	India	150Ah	12	26	0	270	533*228*285	left
N200 (200AH)	12	India	200Ah	12	30.69	0	850	539*285*311	left
NS0 (50AH)	12	India	50Ah	12	9.41	0	290	266*177*270	left
NS40L (32AH)	12	India	32Ah	12	6.71	0	210	208*134*266	left

MPG



SCAN FOR MORE
INFORMATION



Pure Gel battery

Deep Cycle Pure Gel

Uses: Solar/wind system, Marine and deep discharge UPS etc.



Products

Product Name	Warranty (months)	Made In	capacity	voltage	Approximate weight (kg)	terminal	Cycle life vs DOD%		
							30% DOD	50%DOD	100% DOD
MPG100-12 (100AH)	12	Vietnam / China	100Ah	12	30	F12(M8)/F5(M8)	1750	1500	500
MPG150-12 (150AH)	12	Vietnam / China	150Ah	12	44.5	F12(M8)/F5(M8)	1750	1500	500
MPG225-12 (225AH)	12	Vietnam / China	225Ah	12	65	F16(M8)/F10(M8)	1750	1500	500

MTU



SCAN FOR MORE
INFORMATION



MTU

Tubular Batteries

Indian technology, Very high quality.



Products

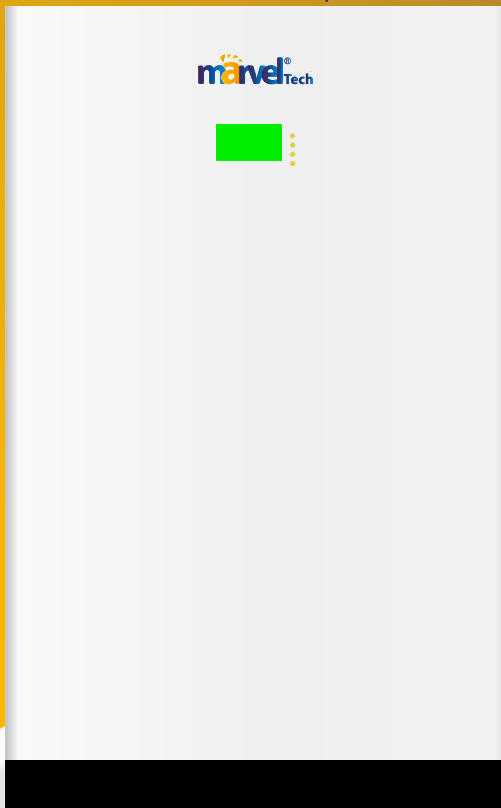
Product Name	Warranty (months)	Made In	capacity	voltage	Approximate weight (kg)	terminal	Cycle life vs DOD%		
							30% DOD	50%DOD	100% DOD
MTU-115 Premium by EXIDE (115AH)	18	India	115Ah	12	55	L Type	3800	2000	800
MTU-150 Premium by EXIDE (150AH)	18	India	150Ah	12	57	L Type	3800	2000	800
MTU-200 Premium by EXIDE (200AH)	18	India	200Ah	12	63	L Type	3800	2000	800
MTU-230 Premium by EXIDE (230AH)	18	India	230Ah	12	77	L Type	3800	2000	800
MTU-200 Premium	18	India	200Ah	12	68	L Type	3800	2000	800
MTU-230 Premium	18	India	230Ah	12	74	L Type	3800	2000	800
MTU-100 (100AH)	15	India	100Ah	12	52.3	L Type	3800	2000	800
MTU-150 (150AH)	15	India	150Ah	12	57	L Type	3800	2000	800
MTU-200 (200AH)	15	India	200Ah	12	63.2	L Type	3800	2000	800
MTU-220 (220AH)	15	India	220Ah	12	70	L Type	3800	2000	800
MTU-240 (240AH)	15	India	240Ah	12	71.2	L Type	3800	2000	800
MTU-220 Carbon	15	India	220Ah	12	66	L Type	2000	1500	600

ML



solar
inverter

power wall
Lithium Battery



SCAN FOR MORE
INFORMATION



Lithium lifePO4 Battery

LifePo4 battery is ideal for energy storage systems (ESS) Such as Solar & other renewable systems.



Products

Product Name	Category	Warranty (years)	Made In	capacity	voltage	Approximate weight (kg)	Cycle Times
ML150-12	ML	3 years	China	150Ah	12.8	15	4000 cycles @80% DOD, 0.5C/1C
ML200-12	ML	3 years	China	200Ah	12.8	22	4000 cycles @80% DOD, 0.5C/1C
ML100-51.2	ML	5 years	China	100Ah	51.2V	45	4000 cycles @80% DOD, 0.5C/1C
ML100-25.6 R	ML	5 years	China	100Ah	25.6V	27	6000 cycles @80% DOD, 25c, 0.5C
ML100-48 R	ML	5 years	China	100Ah	48V	46	6000 cycles @80% DOD, 25c, 0.5C
ML200-48 R	ML	5 years	China	200Ah	48V	83	6000 cycles @80% DOD, 25c, 0.5C
ML200-51.2	ML	5 years	China	200Ah	51.2 V	110	6000 cycles @80% DOD, 25c, 0.5C

Solar Inverters

High Frequency Inverter

HF Inverter MIS series

3-Phase Inverter

Low Frequency Inverter

Pump Inverter

Power Inverter

MI Power Inverter

INVERTERS

MP

VM

MI

MIS

TX

VM

MAX



- Axpert King 3K
- Axpert KING II-5KVA
- Axpert King II TWIN 6.2K
- Axpert VM II 1.2KW
- Axpert VM II 2.5KW
- Axpert VM II TWIN 3.6K
- Axpert VM II TWIN 5.6K
- Axpert VM III TWIN 4K
- Axpert VM III TWIN 6K
- Axpert VM IV 3600-24
- Axpert VM IV 5600-48
- Axpert VM 3K Value
- Axpert MKS III 5000-48
- Axpert MKS IV 5600-48
- Axpert MAX II 8000
- Axpert MAX II TWIN 8K
- Axpert MAX 7200-48-230
- MAX E-11000

HIGH FREQUENCY INVERTER



SCAN FOR MORE INFORMATION

HIGH FREQUENCY INVERTER

High Frequency Inverter welders use submillisecond pulsewidth modulation (switching) technology with closed-loop feedback to control the weld energy in sub-millisecond increments.

AXPERT KING

Axpert King 3K INVERTER

features

- Zero (0ms) transfer time to protect mission-critical loads such as servers and ATMs
- Removable LCD control module with multiple communications
- Selectable high power charging current
- Smart battery charger design for optimized battery performance
- Cold start function
- Optional parallel operation up to 9 units

Power : 3kW
Nominal Voltage: 230VAC



MODEL	Axpert King 3K
Rated Power	3000VA/3000W
Battery Voltage	24 VDC
Maximum PV Array Power	1500 W
MPPT Range @ Operating Voltage	30 ~ 115 VDC
Maximum Solar Charge Current	60 A
Maximum AC Charge Current	60 A
Maximum Charge Current	120 A
Net Weight (kgs)	13
Communication Interface	USB/RS232/RS485/Bluetooth/Dry-contact

Axpert KING II-5KVA

INVERTERS

features

- Zero (0ms) transfer time to protect mission-critical loads such as servers and ATMs
- Removable LCD control module with multiple communications
- Selectable high power charging current
- Smart battery charger design for optimized battery performance
- Cold start function
- Optional parallel operation up to 9 units

Power : 5 kW
Nominal Voltage: 230VAC

MODEL	Axpert KING II-5KVA
Rated Power	5000VA/5000W
Battery Voltage	40~66 VDC
Maximum PV Array Power	6000 W
MPPT Range @ Operating Voltage	120 ~ 450 VDC
Maximum Solar Charge Current	100 A
Maximum AC Charge Current	100 A
Maximum Charge Current	100 A
Net Weight (kgs)	12
Communication Interface	USB/RS232/RS485/WiFi/Dry-contact



Axpert KING II -TWIN 6.2KVA

INVERTERS

features

- Zero (0ms) transfer time to protect mission-critical loads such as servers and ATMs
- Removable LCD control module with multiple communications
- Selectable high power charging current
- Smart battery charger design for optimized battery performance
- Cold start function
- Optional parallel operation up to 9 units

Power : 6.2 kW
Nominal Voltage: 230VAC

MODEL	Axpert KING II-TWIN 6.2KVA
Rated Power	6200VA/6200W
Battery Voltage	40~66 VDC
Maximum PV Array Power	6000 W
MPPT Range @ Operating Voltage	120 ~ 430 VDC
Maximum Solar Charge Current	120 A
Maximum AC Charge Current	120 A
Maximum Charge Current	120 A
Net Weight (kgs)	12
Communication Interface	USB/RS232/RS485/WiFi/Dry-contact



VM II INVERTER

features

- Pure sine wave solar inverter
- Selectable high power charging current
- Selectable input voltage range for home appliances and personal computers
- Overload and short circuit protection
- Smart battery charger design for optimized battery performance
- Cold start function

Power : 1.2-2.5 kW
Nominal Voltage: 230VAC



MODEL	Axpert VM II 1.2KW	Axpert VM II 2.5KW
Rated Power	1200VA/1200W	2500VA/2500W
Battery Voltage	12VDC	24 VDC
Maximum PV Array Power	2000W	3000W
MPPT Range @ Operating Voltage	60 ~ 300 VDC	60 ~ 400 VDC
Maximum Solar Charge Current	80 A	
Maximum AC Charge Current	80 A	
Maximum Charge Current	80 A	
Net Weight (kgs)	6.5	
Communication Interface	RS232	

VM II TWIN INVERTER

features

- 1 factor power Output
- Battery independent design
- Battery equalization function to optimize battery performance and extend lifecycle
- maximum PV input current increases to 27A
- Dual outputs for smart load management

Power : 3.6-5.6kW
Nominal Voltage: 230VAC



MODEL	Axpert VM II TWIN 3.6K	Axpert VM II TWIN 5.6K
Rated Power	3600VA/3600W	5600VA/5600W
Battery Voltage	24 VDC	48 VDC
Maximum PV Array Power	5000 W	6000 W
MPPT Range @ Operating Voltage	60~450 VDC	
Maximum Solar Charge Current	100 A	
Maximum AC Charge Current	100 A	
Maximum Charge Current	100 A	
Net Weight (kgs)	9	
Communication Interface	USB/RS232	

VM III TWIN INVERTER

features

- Pure sine wave
- Detachable LCD control module with various communications
- Built-in WiFi for mobile monitoring (App is available)
- Supports USB On-the-Go function
- Battery independent design
- Battery equalization extends lifecycle

Power : 4-6kW
Nominal Voltage: 230VAC



MODEL	Axpert VM III TWIN 4K	Axpert VM III TWIN 6K
Rated Power	4000VA/4000W	6000VA/6000W
Battery Voltage	24 VDC	48 VDC
Maximum PV Array Power	5000 W	6000 W
MPPT Range @ Operating Voltage	60~450 VDC	
Maximum Solar Charge Current	120 A	
Maximum AC Charge Current	100 A	
Maximum Charge Current	120 A	
Net Weight (kgs)	9	10
Communication Interface	USB/RS232/RS485/WiFi/Dry-contact	

VM IV INVERTER

features

- Pure sine wave solar inverter
- Customizable status LED ring with RGB lights
- Touchable button with large 4.3" colored LCD
- Built-in Wifi for mobile monitoring (Android/iOS App available)
- Supports USB On-the-Go function
- works with and without Battery
- Battery equalization extends lifecycle

Power : 3.6-5.6kW
Nominal Voltage: 230VAC



MODEL	Axpert VM IV 3600-24	Axpert VM IV 5600-48
Rated Power	3600VA/3600W	5600VA/5600W
Battery Voltage	24 VDC	48 VDC
Maximum PV Array Power	4000 W	6000 W
MPPT Range @ Operating Voltage	120~450 VDC	
Maximum Solar Charge Current	120 A	
Maximum AC Charge Current	100 A	
Maximum Charge Current	120 A	
Net Weight (kgs)	10	12
Communication Interface	USB/RS232/RS485/Bluetooth/Dry-contact/Built-in Wifi	

V-Value INVERTER



features

- Pure sine wave solar inverter
- Selectable input voltage range for home appliances and personal computers
- Overload and short circuit protection
- Smart battery charger design for optimized battery performance
- Cold start function

Power : 3 kW
Nominal Voltage: 230VAC

MODEL	Axpert VM 3K Value
Rated Power	3000VA/2400W
Battery Voltage	24 VDC
Maximum PV Array Power	1000W
MPPT Range @ Operating Voltage	30 ~ 80 VDC
Maximum Solar Charge Current	40 A
Maximum AC Charge Current	25 A
Maximum Charge Current	60 A
Net Weight (kgs)	5.7
Communication Interface	USB/RS-232

MKS III INVERTER

features

- Pure sine wave solar inverter
- Detachable LCD control module with multiple communications
- Built-in Bluetooth for mobile monitoring (Android App is available)
- Smart battery charger design for optimized battery performance works with and without Battery
- Parallel operation with up to 9 units

Power : 5 kW
Nominal Voltage: 230VAC

MODEL	Axpert MKS III 5000-48
Rated Power	5000VA/5000W
Battery Voltage	48 VDC
Maximum PV Array Power	5000W
MPPT Range @ Operating Voltage	120 ~ 430 VDC
Maximum Solar Charge Current	100 A
Maximum AC Charge Current	100 A
Maximum Charge Current	100 A
Net Weight (kgs)	12
Communication Interface	USB/RS232/RS485/Bluetooth



MKS IV INVERTER

features

- Customizable status LED ring with RGB lights
- Touchable button with 4.3" colored LCD
- Battery independent function
- Smart battery charger design for optimized battery performance
- Optional dual outputs for smart load management (check sales)
- Parallel operation with up to 9 units

Power : 5 kW
Nominal Voltage: 230VAC

MODEL	Axpert MKS IV 5600-48
Rated Power	5600VA/5600W
Battery Voltage	48 VDC
Maximum PV Array Power	6000 W
MPPT Range @ Operating Voltage	120 ~ 430 VDC
Maximum Solar Charge Current	120 A
Maximum AC Charge Current	120 A
Maximum Charge Current	120 A
Net Weight (kgs)	12
Communication Interface	USB/RS232/RS485/Bluetooth/Dry-contact



MAX INVERTER

features

- Pure sine wave solar inverter
- Status indication with RGB lights
- Built-in Wi-Fi for mobile monitoring (Android/iOS App is available)
- works with and without Battery
- Selectable input voltage range for home appliances and personal computers
- Optional DC output for DC fan, LED bulb, router and so on.
- Parallel operation with 6 units

Power : 7.2 kW
Nominal Voltage: 230VAC



MODEL	Axpert MAX 7200-48-230
Rated Power	7200VA/7200W
Battery Voltage	48 VDC
Maximum PV Array Power	8000W (4000W x 2)
MPPT Range @ Operating Voltage	90 ~ 450 VDC
Maximum Solar Charge Current	80 A
Maximum AC Charge Current	80 A
Maximum Charge Current	80 A
Net Weight (kgs)	18.4
Communication Interface	USB/RS232/RS485/WiFi/Dry-contact

MAX-E INVERTER

features

- Pure sine wave solar inverter
- Status indication with RGB lights
- Built-in Wi-Fi for mobile monitoring (Android/iOS App is available)
- works with and without Battery
- Selectable input voltage range for home appliances and personal computers
- Parallel operation with 6 units

Power : 11 kW
Nominal Voltage: 230VAC



MODEL	MAX E-11000
Rated Power	11000VA/11000W
Battery Voltage	48 VDC
Maximum PV Array Power	11000W
MPPT Range @ Operating Voltage	90 ~ 450 VDC
Maximum Solar Charge Current	150A
Maximum AC Charge Current	150A
Maximum Charge Current	150A
Net Weight (kgs)	18.4
Communication Interface	USB/RS232/RS485/WiFi/Dry-contact

MAX II INVERTER

features

- Pure sine wave solar inverter
- Status indication with RGB lights
- Built-in Wi-Fi for mobile monitoring (Android/iOS App is available)
- Selectable input voltage range for home appliances and personal computers
- Built-in DC output for DC fan, LED bulb, router and so on.
- Battery independent design
- Parallel operation with 6 units

Power : 8 kW
Nominal Voltage: 230VAC

MODEL	Axpert MAX II 8000
Rated Power	8000VA/8000W
Battery Voltage	48 VDC
Maximum PV Array Power	8000W (4000W x 2)
MPPT Range @ Operating Voltage	90 ~ 450 VDC
Maximum Solar Charge Current	150A
Maximum AC Charge Current	120A
Maximum Charge Current	150A
Net Weight (kgs)	20
Communication Interface	USB/RS232/RS485/WiFi/Dry-contact



MAX II Twin INVERTER

features

- Status indication with RGB lights
- Selectable input voltage range for home appliances and personal computers
- Built-in DC output for DC fan, LED bulb, router and so on.
- Battery independent design
- Dual outputs, for smart load management(only for Twin model)
- Maximum PV input current increases to 27A (only for Twin model)
- Parallel operation with 6 units

Power : 8 kW
Nominal Voltage: 230VAC

MODEL	Axpert MAX II TWIN 8K
Rated Power	8000VA/8000W
Battery Voltage	48 VDC
Maximum PV Array Power	8000W (4000W x 2)
MPPT Range @ Operating Voltage	90 ~ 450 VDC
Maximum Solar Charge Current	150A
Maximum AC Charge Current	120A
Maximum Charge Current	150A
Net Weight (kgs)	20
Communication Interface	USB/RS232/RS485/WiFi/Dry-contact



HF INVERTER MIS SERIES

MIS-1012I

MIS-NO 1512-20

MIS-NO 2424-30

MIS-3024I

MIS-3024II

MIS-3024 PRO

MIS-NO 3624-62

MIS-5248 PRO

MIS-NO 6248-65



SCAN FOR MORE
INFORMATION



HF INVERTER MIS SERIES

High Frequency Inverter welders use submillisecond pulsewidth modulation (switching) technology with closed-loop feedback to control the weld energy in sub-millisecond increments.

MIS

MIS-1012I INVERTER

features

- Can provide the power to the load without battery
- Overload, short circuit and Deep discharge protection
- Cold start function
- WiFi remote monitoring (optional)
- Compatible to generator
- Support parallel operation up to 3 units (available for 3KW-5KW 48V)

Power : 1KW
Nominal Voltage: 230 VAC

MODEL	MIS-1012I
Rated Power	1000VA \ 1000W
Battery Voltage	12VDC
Maximum PV Array Power	625W
MPPT Range @ Operating Voltage	15~75VDC
Maximum Solar Charge Current	60A
Maximum AC Charge Current	10A or 20A
Net Weight (kgs)	5
Communication Interface	USB, RS485

Power : 1.5KW
Nominal Voltage: 230 VAC

MODEL	MIS-NO 1512-20
Rated Power	1500VA/1500W
Battery Voltage	12VDC
Maximum PV Array Power	2000W
MPPT Range @ Operating Voltage	90~430VDC
Maximum Solar Charge Current	80A
Maximum AC Charge Current	60A
Net Weight (kgs)	4kg
Communication Interface	RS232(Standard)GPRS/WIFI(Optional)



MIS-NO 2424-30 INVERTER

features

- Pure sine wave solar inverter
- Smart battery charge design to optimize battery life
- Compatible with lithium-ion battery
- Solar energy is provided directly to the load first

Power : 2.4 KW
Nominal Voltage: 230 VAC

MODEL	MIS-NO 2424-30
Rated Power	3000VA/2400W
Battery Voltage	24VDC
Maximum PV Array Power	3000W
MPPT Range @ Operating Voltage	90~430VDC
Maximum Solar Charge Current	80A
Maximum AC Charge Current	60A
Net Weight (kgs)	5kg
Communication Interface	RS232(Standard)GPRS/WIFI(Optional)



MIS-3024I INVERTER

features

- Can provide the power to the load without battery
- Overload, short circuit and Deep discharge protection
- Cold start function
- WIFI remote monitoring (optional)
- Compatible to generator
- Support parallel operation up to 3 units (available for 3KW-5KW 48V)

Power : 3 KW
Nominal Voltage: 230 VAC

MODEL	MIS-3024I
Rated Power	3000VA \ 3000W
Battery Voltage	24VDC
Maximum PV Array Power	1500W
MPPT Range @ Operating Voltage	30~120VDC
Maximum Solar Charge Current	60A
Maximum AC Charge Current	20A or 30A
Net Weight (kgs)	7.4
Communication Interface	USB, RS485

MIS-3024II INVERTER

features

- Battery equalization function to optimize battery performance and extend lifecycle
- High PV input voltage range
- Output power factor 1

Power : 3KW
Nominal Voltage: 230 VAC

MODEL	MIS-3024II
Rated Power	3000W
Battery Voltage	24VDC
MPPT Range @ Operating Voltage	30 ~ 130VDC
Maximum Solar Charge Current	60/80A
Maximum AC Charge Current	20/30A
Net Weight (kgs)	11
Communication Interface	USB, RS485

MIS-3024 PRO , MIS-5248 PRO INVERTER

features

- Can provide the power to the load without battery
- Overload, short circuit and Deep discharge protection
- Cold start function
- WIFI remote monitoring (optional)
- Compatible to generator

Power : 3 KW , 5.2 KW
Nominal Voltage: 230 VAC

MODEL	MIS-3024 PRO	MIS-5248 PRO
Rated Power	3000W	5200W
Battery Voltage	24VDC	48VDC
MPPT Range @ Operating Voltage	150 ~ 450 VDC	150 ~ 450 VDC
Maximum Solar Charge Current	80Amp	80Amp
Maximum AC Charge Current	60Amp	60Amp
Net Weight (kgs)	11	14
Communication Interface	USB, RS485	USB, RS485



MIS-NO 3624-62 , MIS-NO 6248-65 INVERTER

features

- Pure sine wave solar inverter
- Inverter running without battery
- Smart battery charge design to optimize battery life
- Dual output(V2.0)

Power : 3.6 KW , 6.2 KW
Nominal Voltage: 230 VAC

MODEL	MIS-NO 3624-62	MIS-NO 6248-65
Rated Power	3600W	6200W
Battery Voltage	24VDC	48VDC
Maximum PV Array Power	6200W	6500W
MPPT Range @ Operating Voltage	90VDC~450VDC	90VDC~450VDC
Maximum Solar Charge Current	120A	120A
Maximum AC Charge Current	100A	100A
Net Weight (kgs)	10	11
Communication Interface	RS232/WIFI/BMS	



THREE PHASE INVERTERS

InfiniSolar WP
InfiniSolar 3P 15KW
InfiniSolar V II
InfiniSolar TX



SCAN FOR MORE
INFORMATION



THREE PHASE ON-GRID INVERTERS

Convert the DC voltage to three-phase AC supply high power and variable frequency drive applications

InfiniSolar 3P INVERTER



features

- Pure sine wave output
- Self-consumption and Feed-in to the grid
- Programmable supply priority for PV, Battery or Grid
- User-adjustable battery charging current suits different types of batteries
- Programmable multiple operation modes: Grid-tie, off-grid and grid-tie with backup
- Built-in timer for various mode of on/off operation
- Multiple communication for USB, RS232-, Modbus and SNMP
- Monitoring software for real-time status display and control
- Parallel operation up to 6 units for 5KW, 10KW and 15KW

Power : 15 kW
Nominal Voltage: 380VAC

MODEL	InfiniSolar 3P 15KW
Rated Power	15KW
Battery Voltage	48 VDC
Maximum PV Array Power	22.5 KW
MPPT Range @ Operating Voltage	350 VDC ~ 850 VDC
Nominal Output Voltage	400 VAC (P-P)
Nominal Output Current	21.7A per phase
Maximum Charging Current	Default 60A, 5A - 300A (Adjustable)
Maximum AC Input Current	40 A
Net Weight (kgs)	62
Communication Port	RS232-/USB
Intelligent Slot	Optional SNMP, Modbus and AS400- cards available

InfiniSolar WP INVERTER



features

- IP65 waterproof and dustproof makes the inverter available for various working conditions.
- %150 unbalanced load support
- Dual outputs for smart load management
- Built-in AC coupled function , Built-in WiFi for mobile monitoring
- User-adjustable charging current up to 50A
- Wide battery input range
- Built-in communication port for BMS (RS485)
- Parallel operation up to 4 units

Power : 30 kW
Nominal Voltage: 380VAC

MODEL	InfiniSolar WP 30kW
Rated Power	30 KW
Battery Voltage	600~ 1000 VDC
Maximum PV Array Power	40W
MPPT Range @ Operating Voltage	230 VAC (P-N) / 400 VAC (P-P)
Nominal Output Current	43.5 A per phase
Maximum Charging Current	50 A
Maximum AC Input Current	40 A
Net Weight (kgs)	73
Communication Port	RS-232, RS-485, USB, CAN and Wi-Fi
Intelligent Slot	Optional for SNMP and Modbus cards

InfiniSolar V II INVERTER

features

- Pure sine wave output
- Self-consumption and Feed-in to the grid
- Programmable supply priority for PV, Battery or Grid
- User-adjustable charging current and voltage
- Programmable multiple operation modes:
 - Grid-tie, off-grid and grid-tie with backup
- Monitoring software for real-time status display and control

Power : 6 kW
Nominal Voltage: 380VAC



MODEL	InfiniSolar V II 3P-6KW
Rated Power	6 KW
Battery Voltage	48VDC
Maximum PV Array Power	9KW
MPPT Range @ Operating Voltage	120 VDC ~ 430 VDC
Nominal Output Voltage	220/230/240 VAC per phase
Nominal Output Current	8.7 A per phase
Maximum AC Charging Current	180A
Maximum AC Input Current	20 A per phase
Net Weight (kgs)	36
Communication Port	RS-232, USB and dry contact

InfiniSolar TX INVERTER

features

- Pure sine wave output
- Self-consumption and Feed-in to the grid
- Programmable supply priority for PV, Battery or Grid
- True galvanic isolation transformer design
- User-adjustable charging current
- Programmable multiple operation modes: Grid-tie, off-grid and grid-tie with backup
- Built-in timer for various mode of on/off operation
- Ininisolar TX/TX-PA 3 Phase Transformer
- Type Hybrid Inverter Specication

Power : 20 kw , 30kw
Nominal Voltage: 380VAC



MODEL	InfiniSolar TX 20KW R	InfiniSolar TX-PA 30KW
Rated Power	20 KW	30 KW
Battery Voltage	384 VDC	384 VDC / 384 VDC ~ 480 VDC
Maximum PV Array Power	30KW	45KW
MPPT Range @ Operating Voltage	500 VDC ~ 900 VDC	460 VDC ~ 900 VDC
Nominal Output Voltage	230 VAC* (P-N) / 400 VAC (P-P)	230 VAC* (P-N) / 400 VAC (P-P)
Nominal Output Current	29.0 A per phase	43.5 A per phase
Maximum AC Charging Current	50A	80A
Maximum AC Input Current	40 A per phase	43.5 A per phase
Net Weight (kgs)	120	223
Communication Port	RS-232/USB	RS-232/USB
Intelligent Slot	Optional SNMP, GPRS, WIFI, Modbus cards available	Optional SNMP, GPRS, WIFI, Modbus cards available

LOW FREQUENCY SOLAR INVERTER

MIS-1500

MIS-2000



SCAN FOR MORE
INFORMATION

MIS Low Frequency Inverter

features

- Pure sine wave output
- 3 Steps charging
- Overload and short-circuit protection
- Set charging voltage/charging current
- Battery low voltage shutdown point can be set to 11\10.5\10V

Power : 1.5 kW
Nominal Voltage: 230VAC

Product Name	MIS-1500
Rated Power	1.5 KW
Battery Voltage	12VDC
Maximum PV array power	1250W
Maximum AC Charge Current	45A
Maximum MPPT Charge Current	80A
MPPT range @ Operating Voltage	16-100 VDC
Net Weight (kgs)	17.7
Warranty (years)	1
Made In	China



MIS Low Frequency Inverter

features

- Pure sine wave output
- 3 Steps charging
- Overload and short-circuit protection
- Set charging voltage/charging current
- Battery low voltage shutdown point can be set to 11\10.5\10V

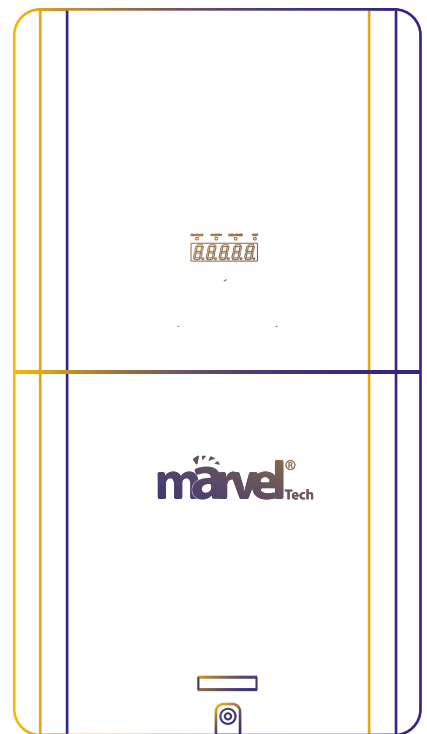
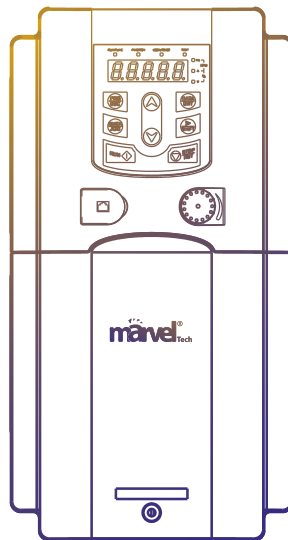
Power : 2 kW
Nominal Voltage: 230VAC

Product Name	MIS-2000
Rated Power	2 KW
Battery Voltage	12VDC
Maximum PV array power	1250W
Maximum AC Charge Current	60A
Maximum MPPT Charge Current	80A
MPPT range @ Operating Voltage	16-100 VDC
Net Weight (kgs)	21.8
Warranty (years)	1
Made In	China



PUMP INVERTER

GD100-2R2G-SS2-PV
GD100-004G-SS2-PV
GD100-5R5G-4-PV
GD100-7R5G-4-PV
GD100-011G-4-PV
GD100-015G-4-PV
GD100-018G-4-PV
GD100-030G-4-PV
GD100-045G-4-PV
GD100-055G-4-PV
GD100-075G-4-PV
GD100-090G-4-PV
GD100-110G-4-PV



SCAN FOR MORE
INFORMATION

Pump Inverter

features

- The inverters automatically start or sleep only after being connected to solar panel without any parameter setting.
- IP20
- Including PV over-voltage protection, PV polarity reverse warning, auto derating against over-temperature etc, which can extend product's life.
- Ensure the solar power tracking efficiency reaches 99% .



Product Name	Warranty (years)	Made In	Capacity (KW)	Input Current	Output Current
GD100-2R2G-SS2-PV	1	China	2.2	24	14
GD100-004G-SS2-PV	1	China	4	17	16
GD100-5R5G-4-PV	1	China	5.5	19.5	14
GD100-7R5G-4-PV	1	China	7.5	25	18.5
GD100-011G-4-PV	1	China	11	32	25
GD100-015G-4-PV	1	China	15	40	32
GD100-018G-4-PV	1	China	18.5	47	38
GD100-030G-4-PV	1	China	30	70	60
GD100-045G-4-PV	1	China	45	90	92
GD100-055G-4-PV	1	China	55	105	115
GD100-075G-4-PV	1	China	75	139	150
GD100-090G-4-PV	1	China	90	168	180
GD100-110G-4-PV	1	China	110	201	215

POWER INVERTERS

MI-900	MI-3012
MI-1000	MI-3024
MI-1200	MI-4024
MI-1400	MI-5048
MI-1500	MI-6048
MI-1512	MI-8048
MI-2012	MI-12048
MI-2024	



SCAN FOR MORE
INFORMATION



POWER INVERTERS

operate electrical equipment from the power produced by a battery or renewable energy sources, like solar panels or wind turbines

MI INVERTER

features

- Pure Sine Wave Output
- Smart Lcd Setting (Frequency , Charge Voltage,charge Current, Etc).
- 3 Steps Charging Algorithm
- Overload And Short-circuit Protection
- Battery Reverse Polarity Protection (Optional)
- Cold Start Function



MODEL	MI-900	MI-1200	MI-1500
Rated Power	600W	800W	1000W
Battery Voltage	12VDC	12VDC	12VDC
Maximum Charge Current	20A	25 A	30 A
Net Weight (kgs)	7.5	10.7	12.5
Communication Port	RS-232/USB	RS-232/USB	RS-232/USB

MI INVERTER

features

- DSP technology for fast & smooth charging
- Auto sense intelligent charging (ASIC) adjustment
- Highly robust & reliable
- Ideal for computer
- User selectable charging current
- Generator compatible
- Wide charging voltage range
- Home appliance friendly
- Environment friendly
- Battery Management
- Negligible battery water loss
- Compact design



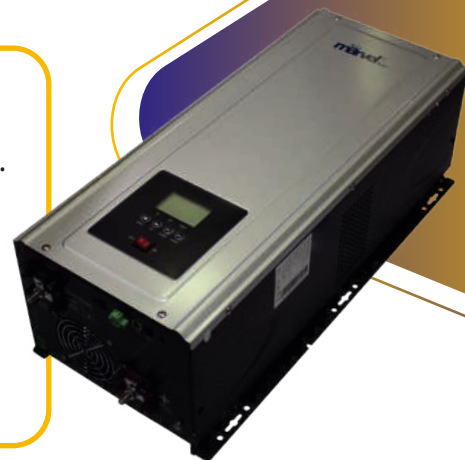
**MADE
IN
INDIA**

MODEL	MI-1000	MI-1400
Rated Power	1000VA	1400VA
Battery Voltage	12 V	12 V
Maximum Charge Current	18 A	23A

MI INVERTER

features

- Pure Sine Wave Output
- Smart Lcd Setting (Frequency , Charge Voltage,charge Current, Etc).
- 3 Steps Charging Algorithm
- Overload And Short-circuit Protection
- Battery Reverse Polarity Protection (Optional)
- Cold Start Function



MODEL	MI-1512	MI-2012	MI-2024	MI-3012	MI-3024	MI-4024	MI-5048	MI-6048
Rated Power	1.5KW	2KW	2KW	3KW	3KW	4KW	5KW	6KW
Capable Of Starting Electric Motor	1HP	1HP	1HP	2HP	2HP	2HP	3HP	3HP
Battery Voltage	12VDC	12VDC	24VDC	12VDC	24VDC	24VDC	48VDC	48VDC
Maximum Charge Current	45 A	65 A	35A	75A	45A	65A	40A	50A
Net Weight (kgs)	17	21.1	20	26	24.5	38.2	45	45
Communication Port	RS232	RS232	RS232	RS232	RS232	RS232	RS232	RS232

MI INVERTER

features

- Max 100A automatic 3-stage battery charger
- Built-in Pure copper UI transformer
- Automatically send signal to start generator
- DC start & automatic self-diagnostic function
- Supporting USB/RS485 communication and BTS & AGS port



MODEL	MI-8048	MI-12048
Rated Power	8 KW	12 KW
Capable Of Starting Electric Motor	4HP	6HP
Battery Voltage	48VDC	48VDC
Maximum Charge Current	70A	100A
Net Weight (kgs)	67.6	74
Communication Port	USB/RS485 communication and BTS & AGS port	

marvel[®] Tech

CHARGERS

MCH 48V40A

MCH 24V30A

MCH 24V30A

MCH-1205A
MCH-1210A

MCH 24V50A



SCAN FOR MORE INFORMATION

1 YEAR
WARRANTY

MADE IN CHINA



CHARGERS

A battery charger or recharger, is a device that stores energy in a battery by running an electric current through it.

POWER CHARGERS



features

- Charging process protection short circuit preventio
- Intelligent soft start battery and charger protection
- Intelligent temperature control Improve charging efficiency
- Low temperature working increase service use time
- Reverse connect protection protective integral circuit
- Automatic power-off remove hidden dangers

PRODUCTS MCH-1203A/1205A/1210A/1220A/1230A/1240A/1250A/2420A

MODEL	Output DC	Input AC	Applicable batteries
MCH-1203A	3A Max	100-240V.50-60Hz	12V
MCH-1205A	5A Max	100-240V.50-60Hz	12V
MCH-1210A	10A Max	100-240V.50-60Hz	12V
MCH-1220A	20A Max	160-240V.50-60Hz	12V
MCH-1230A	30A Max	160-240V.50-60Hz	12V

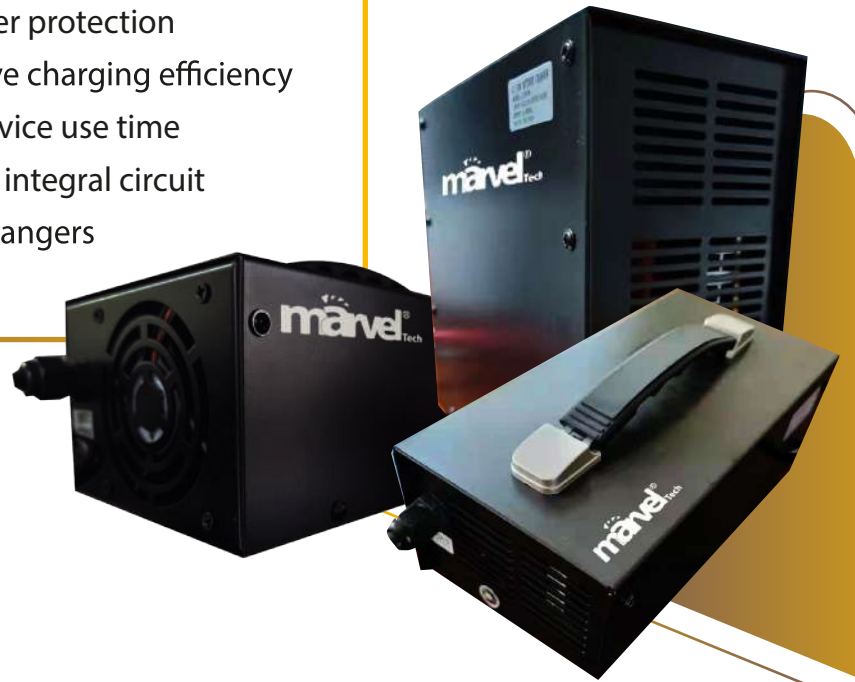
PRODUCTS MCH-1240A/1250A/2420A

MODEL	MCH-1240A	MCH-1250A	MCH-2420A
input voltage	100-240 VAC	100-240 VAC	100-240 VAC
output voltage	24 V12 V		24 V
Rated Frequency	47-63 Hz	47-63 Hz	47-63 Hz
Charger Current	40 A	50 A	20 A
Efficiency	>%90	>%90	> 90%
Material	Plastic	Plastic	ABS
Battery Type	LEAD ACID	LEAD ACID	LEAD ACID
Diminations	288*74*132	288*74*132	132*74*288
Weight	1.2	1.2	1.1



features

- Charging process protection short circuit preventio
- Intelligent soft start battery and charger protection
- Intelligent temperature control Improve charging efficiency
- Low temperature working increase service use time
- Reverse connect protection protective integral circuit
- Automatic power-off remove hidden dangers



PRODUCTS

MCH-2420A-SL/2450A-SL/4820A-SL/4850A-SL

	MCH-2420A-SL	MCH-2450A-SL	MCH-4820A-SL	MCH-4850A-SL
input voltage	180-240 VAC	180-240 VAC	180-240 VAC	180-240 VAC
output voltage	24-25.6 V	24-25.6 V	48-51.2 V	48-51.2 V
Rated Frequency	47-63 Hz	47-63 Hz	47-63 Hz	47-63 Hz
Charger Current	20 A	50 A	20 A	50 A
Efficiency	>%90	>%90	>%90	>%90
Material	Steel	Steel	Steel	Steel
Battery Type	Lithium	Lithium	Lithium	Lithium
Diminations	132*74*288	330*145*200	313*186*117	330*145*270
Weight	1.1	3.1	1.75	3.8

PRODUCTS

MCH-2430A-S/2440A-S/2450A-S/4820A-S

	MCH-2430A-S	MCH-2440A-S	MCH-2450A-S	MCH-4820A-S	MCH-4850A-S	MCH-4840A-S
input voltage	180-240 VAC	180-240 VAC	180-240 VAC	180-240 VAC	180-240 VAC	180-240 VAC
output voltage	24 V	24 V	24 V	48 V	48 V	48 V
Rated Frequency	47-63 Hz	47-63 Hz	47-63 Hz	47-63 Hz	47-63 Hz	47-63 Hz
Charger Current	30 A	40 A	50 A	20 A	50 A	40 A
Efficiency	>%90	>%90	>%90	>%90	>%90	>%90
Material	Steel	Steel	Steel	Steel	Steel	Steel
Battery Type	LEAD ACID	LEAD ACID	LEAD ACID	LEAD ACID	LEAD ACID	LEAD ACID
Diminations	288*74*132	330*145*200	330*145*200	313*186*117	330*145*270	330*145*270
Weight	1.2	3.1	3.1	1.75	3.8	3.8

SOLAR CHARGE CONTROLLER

A solar charge controller is fundamentally a voltage or current controller to charge the battery and keep electric cells from overcharging. It directs the voltage and current hailing from the solar panels setting off to the electric cell.

- MC2420** 24 V 20 A
- MC2430** 24 V 30 A
- MC2440** 24 V 40 A
- MC4860** 48 V 60 A

The Marvel Tech logo, consisting of the word "marvel" in a stylized font with a sunburst icon above the 'a', and "Tech" in a smaller font to the right.

SELECT ENTER

MPPT
SOLAR CHARGE CONTROLLER



SCAN FOR MORE
INFORMATION

MPPT solar charge controller

features

- Optional LCD display(XDB1/XDS1/XDS2)
- Optimized MPPT control algorithm
- Auto limit function of charging power and current
- Over heating power reduction function
- Compatible with lead-acid batteries and lithium batteries
- Peak conversion efficiency of 98%
- High tracking efficiency no less than 99.5%
- Multiple load work modes
- Extensive Electronic protection
- IP33 waterproof degree



MODEL	MC2420	MC2430	MC2440
Nominal system voltage	12/24VDC/	12/24VDC/	12/24VDC/
Battery type	Lead-acid (Sealed/Gel/FloAoudteod)/Lithium (LiFePO4/Li(NiCoMn)O2)/User		
Battery input voltage range	8~32V		
Rated charge current	20A	30A	40A
Rated charge power	260W/12V & 520W/24V	390W/12V & 780W/24V	520W/12V & 1040W/24V
MPP voltage range	(Battery voltage +2V~36V)	(Battery voltage +2V~72V)	(Battery voltage +2V~72V)
Net Weight (kgs)	0.96kg	0.96kg	1.70kg
Communication Port	USB/RS485 communication and BTS & AGS port		

Application



MODEL	MC4860
Nominal system voltage	12/24/36/48VDC/Auto
Battery type	Lead-acid (Sealed/Gel/Flooded)/Lithium (LiFePO4/Li(NiCoMn)O2)/User
Battery input voltage range	8V~68V
Rated charge current	60A
Rated charge power	750W/12V & 1500W/24V & 2250W/36V & 3000W/48V
MPP voltage range	(Battery Voltage +2V ~ 108V)
Net Weight (kgs)	4.5kg
Communication Port	RS485(5VDC/200mA, Two RJ45 ports in parallel)



SOLAR PANELS FROM MARVEL

MONO:

MSP-185W

MSP-380W

MSP-455W

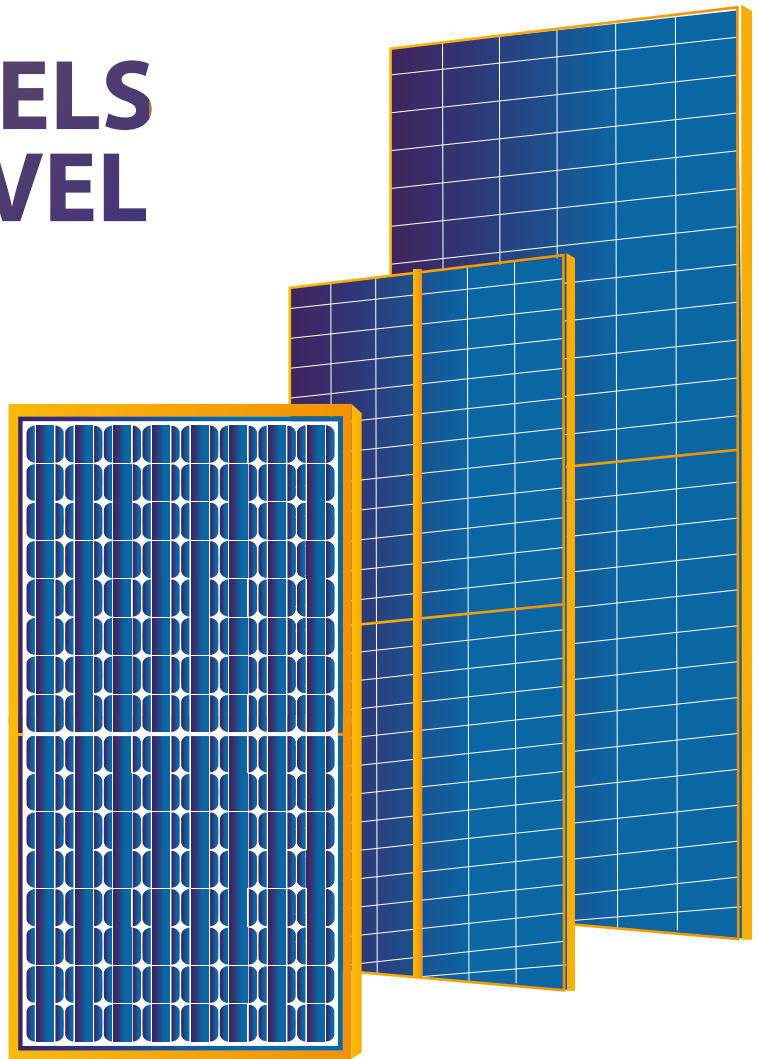
MSP-545W

MSP-550W

HJT:

MSP-470 W HJT B

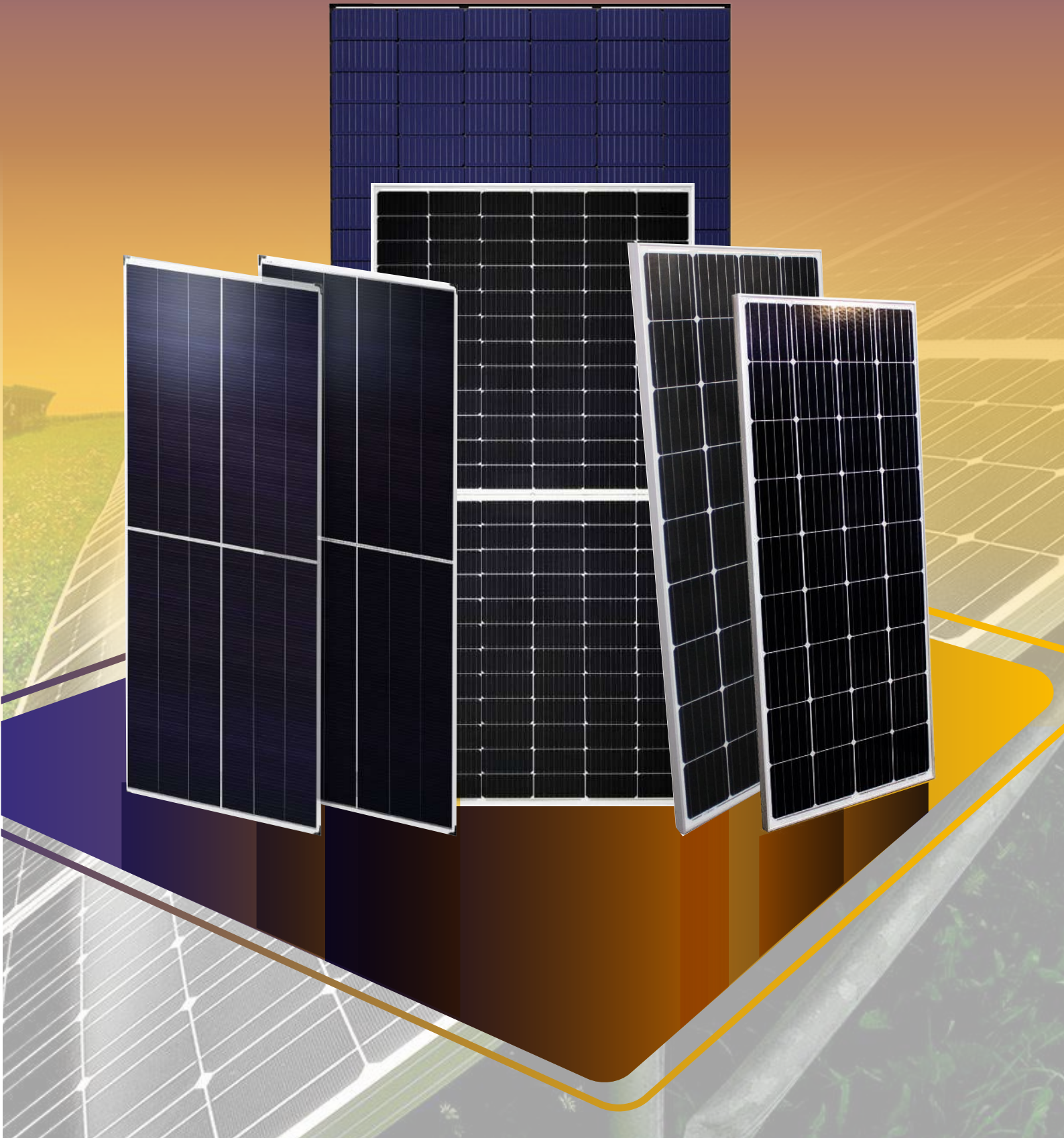
MSP-565 W HJT B



SCAN FOR MORE
INFORMATION

marvel[®] Tech

SOLAR PANELS



MSP-185W

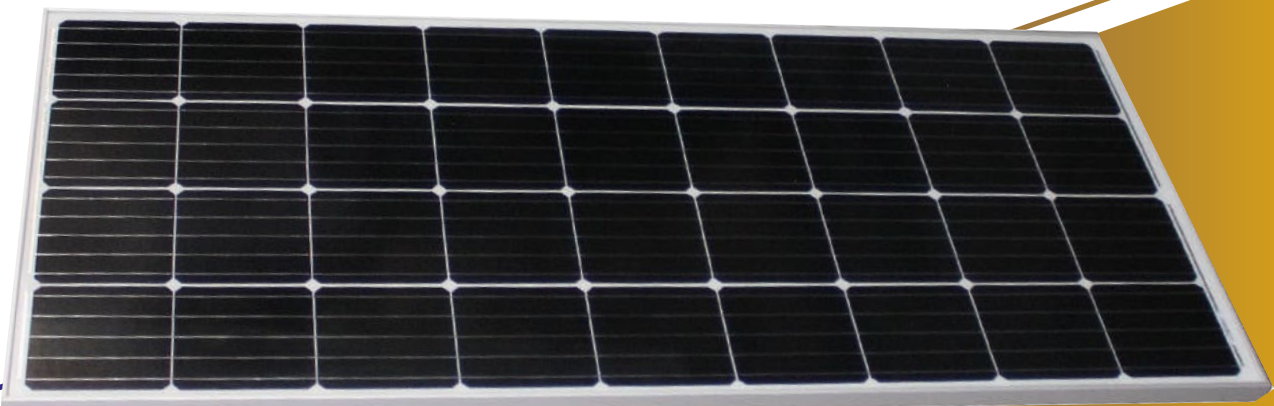
features

- Industry leading lower temperature co-efficient of power
- Industry leading 12 years product warranty
- Excellent low irradiance performance
- Excellent PID resistance
- Positive power tolerance of 3%
- Dual stage 100% EL inspection guarantee defect-free product
- Module Imp binning radically reduces string mis-match losses
- Warranted reliability and stringent quality assurances are well beyond certified requirements
- Certified to withstand severe environmental conditions

12 Year Product Warranty
25 year Linear Power Warranty



MSP-185W	
Max. Power Output Pmax (W)	185
Max. Power Voltage Vmp (V)	19.4
Max. Power Current Imp (A)	9.54
Open Circuit Voltage Voe (V)	23.4
Short Circuit Current Isc (A)	9.78
Module Efficiency (%)	21
Cell Type	Mono crystalline 156.75×156.75 mm
Number of Cells	36 cells (4×9)
Dimensions (L*W*H)	1480×680×30mm



MSP-380W , MSP-455W

features

- Half-Cut technique leads to increased power output
- Series-parallel wiring mode results in reduced shading loss
- Excellent temperature performance
- Reduced encapsulation loss due to reduced current
- 1500V high system voltage design

**12 years Product warranty
on materials and workmanship**



MSP-380W	
1.6 °C It's temperature is 1.6°C lower than that of the conventional module	4% 4% more energy generation
Max. Power Output Pmax (W)	380
Power Tolerance	0~+3%
Max. Power Voltage Vmp (V)	34.71
Max. Power Current Imp (A)	10.95
Open Circuit Voltage Voe (V)	42.5
Short Circuit Current Isc (A)	11.47
Module Efficiency (%)	20.86
Cell Type	Mono 166x83mm
Number of Cells	120pcs(6x24)
Dimensions (L*W*H)	1755x1038x30mm



MSP-455W	
1.6 °C It's temperature is 1.6°C lower than that of the conventional module	4% 4% more energy generation
Max. Power Output Pmax (W)	455
Power Tolerance	0~+3%
Max. Power Voltage Vmp (V)	41.63
Max. Power Current Imp (A)	10.93
Open Circuit Voltage Voe (V)	49.89
Short Circuit Current Isc (A)	11.45
Module Efficiency (%)	20.93
Cell Type	Mono 166x83mm
Number of Cells	144pcs(6x24)
Dimensions (L*W*H)	2094x1038x30mm

MSP-565 W HJT B , MSP-470 W HJT B

features

Fire class A, harsh environment adaptability
 30 -year power warranty
 Elegant appearance & high performance
 1500V system voltage
 The bifacial module is of high light transmittance to ensure good performance, an advanced solution that enables more energy generation, light capturing and elegant appearance.

**30-year quality warranty
 with longer operational life**



MODEL	MSP-565 W HJT B	MSP-470 W HJT B
Max. Power Output Pmax (W)	565	470
Power Tolerance	0~+3%	0~+3%
Max. Power Voltage Vmp (V)	35.1	45.7
Max. Power Current Imp (A)	16.1	10.28
Open Circuit Voltage Voe (V)	40.99	53.95
Short Circuit Current Isc (A)	17.12	11.02
Module Efficiency (%)	21.6	21.62
Cell Type	HJT 210x105mm	HJT 166x83mm
Number of Cells	110pcs(5x22)	144pcs(6x24)
Dimensions (L*W*H)	2384x1096x35mm	2094x1038x30mm
Inegrated Power @ STC		
Power Gains	0.05	0.2
Max. Power Output Pmax (W)	604	557
Max. Power Voltage Vmp (V)	35.45	45.4
Max. Power Current Imp (A)	17.03	12.26
Open Circuit Voltage Voc (V)	41.33	53.75
Short Circuit Current Isc (A)	18.08	13.18

HJT
 Heterojunction technology

- Better Temperature Co-efficient**
- High Reliability**
- bifacial dual glass Double-glass**

HJT: Heterojunction is a special PN junction, which combines two different technologies into one cell: a crystalline silicon cell sandwiched between two layers of amorphous “thin-film” silicon. Compared with using any technology alone, these technologies can be used together to harvest more energy.

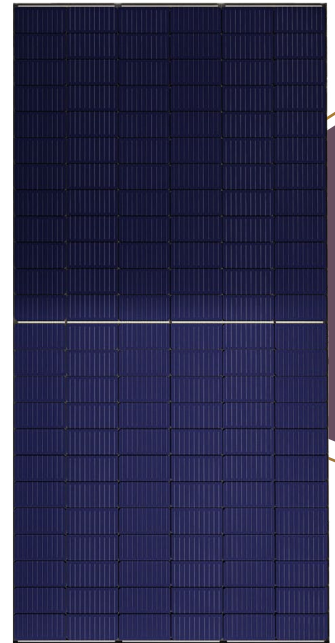
Heterojunction technology

MSP-545W , MSP-550W

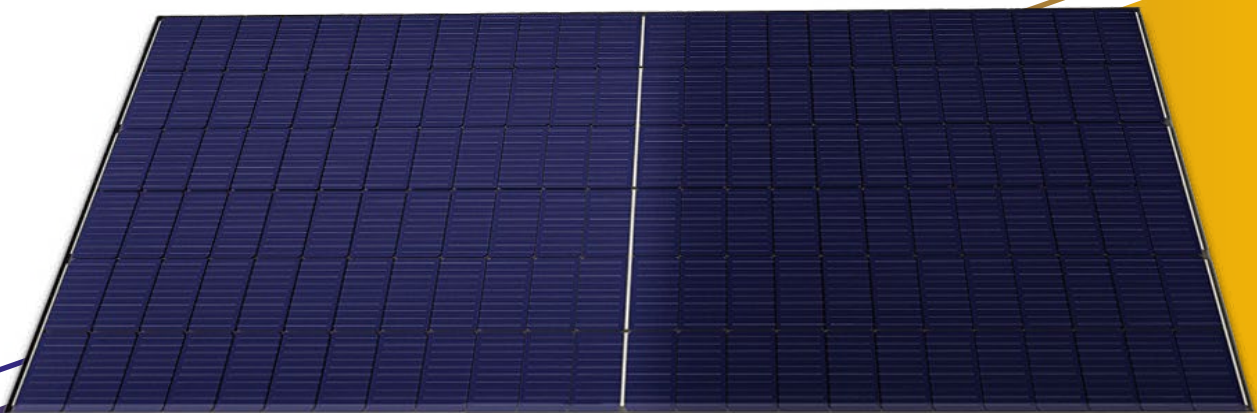
features

Half-Cut technique leads to increased power output
 Series-parallel wiring mode results in reduced shading loss
 Excellent temperature performance
 Reduced encapsulation loss due to reduced current
 1500V high system voltage design

12 years Product warranty
 on materials and workmanship



MODEL	MSP-545W	MSP-550W
1.6 °C It's temperature is 1.6°C lower than that of the conventional module	4% 4% more energy generation	4% 4% more energy generation
Max. Power Output Pmax (W)	545	550
Power Tolerance	0~+3%	0~+3%
Max. Power Voltage Vmp (V)	42.06	42.16
Max. Power Current Imp (A)	12.96	13.05
Open Circuit Voltage Voe (V)	49.7	49.8
Short Circuit Current Isc (A)	13.84	13.94
Module Efficiency (%)	21.1	21.3
Cell Type	Mono 182x91mm	Mono 182x91mm
Number of Cells	144pcs(6x24)	144pcs(6x24)
Dimensions (L*W*H)	2278x1134x35mm	2278x1134x35mm



OTHER PRODUCTS FROM MARVEL

1- Voltage Regulators

2-variable frequency drive (VFD)

3- Mini DC UPS

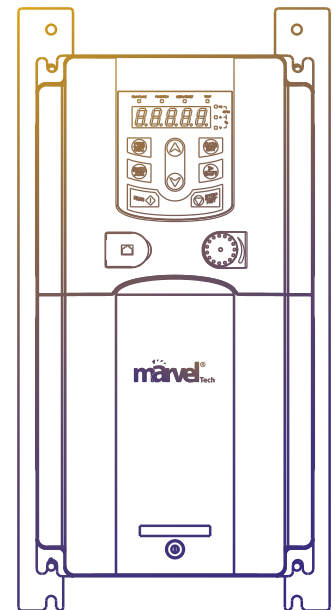
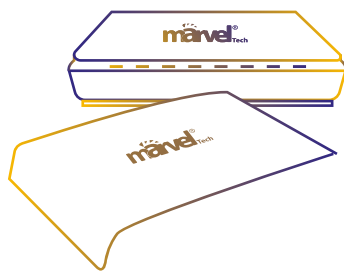
4- Solar accessories:

Solar Connector

Circuit Breaker

Surge Protective Device

Fuse Link



marvel[®] Tech

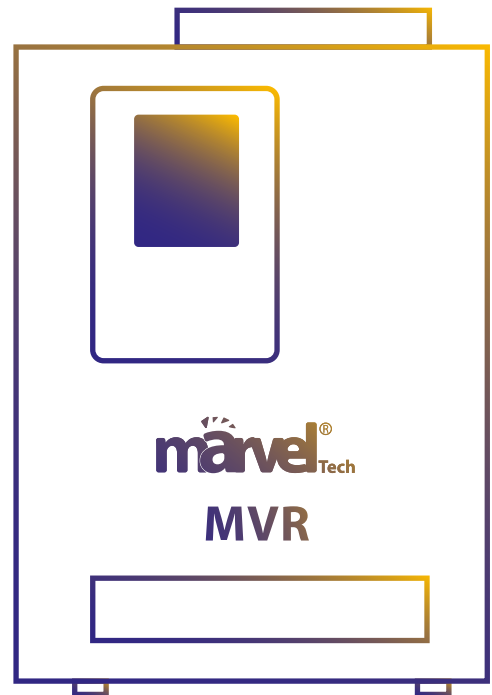
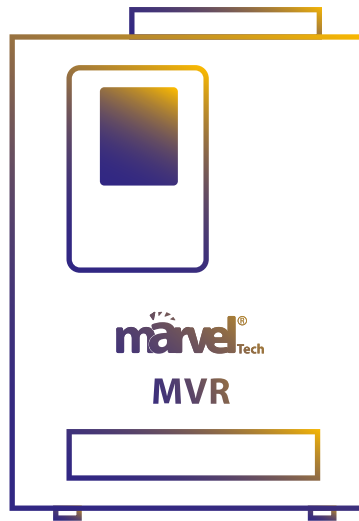
OTHER PRODUCTS



MVR

VOLTAGE REGULATOR

10KVA-MVR
15KVA-MVR
20KVA-MVR



SCAN FOR MORE
INFORMATION

marvel[®] Tech

MVR VOLTAGE REGULATOR

10KVA

20KVA

15KVA



Application



various industries



electric fan



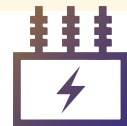
small office equipment



TV set & computer



household appliances



TRANSFORMER
ALUMINUM OR COPPER

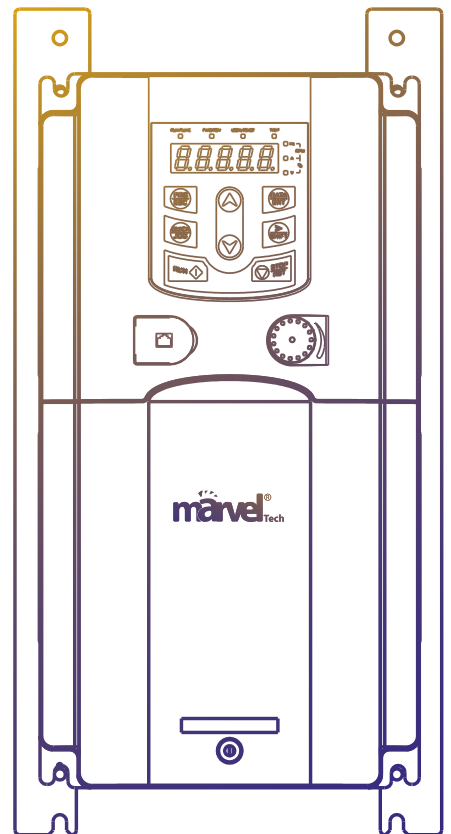
Model	10KVA-MVR	15KVA-MVR	20KVA-MVR
Input Voltage	95-280 VAC		
Output Voltage	+/-10% 220V AC 50/60 Hz		
Delay time	Delay: Short 5-3sec, long 7-3min		
Protection	Over voltage, overload, high temperature, short circuit		
Power	10KVA	15KVA	20KVA
Packing size (Cm)	42.5*27*42.5	30*27*19	30*30*39.5
Packing size (Cm)	25.7*39.5*45	51.5*36.5*51.5	33*36.5*33
N.W (Kgs)	22.6	30.1	32.5
G.W (Kgs)	23.7	34	36

(VFD) VARIABLE FREQUENCY DRIVE

GD200A-5R5G/7R5P-4
GD200A-7R5G/011P-4
GD200A-011G/015P-4

features

- More Accurate Motor Auto-tuning
- Advanced open loop vector control
- Perfect voltage and current control, reducing the fault protection times
- Multiple braking modes and instant stopping
- Ingress protection IP20
- Air-cooling



SCAN FOR MORE
INFORMATION

marvel[®] Tech

(VFD) Variable frequency drive



Application



air
compressor



warming
water supply



mining
machine



fan
& water pump



oil
industry



plastic
machine

MODEL	GD200A-5R5G/7R5P-4	GD200A-7R5G/011P-4	GD200A-011G/015P-4
Rated output power (kW)	5.5/7.5	7.5/11	11/15
input current (A)	19.5/25	25/32	32/40
Rated output current (A)	14/18.5	18.5/25	25/32
Gross weight	4.1kg	7.4kg	7.4kg

MINI DC UPS

MDU, MDU - POE

MDU-512
MDU-924
MDU-POE



SCAN FOR MORE
INFORMATION

marvel[®]Tech

MDU, MDU - POE
Mini DC UPS

MDU-POE

924

512



Application



CCTV



LED Light



Camera



Smart Devices

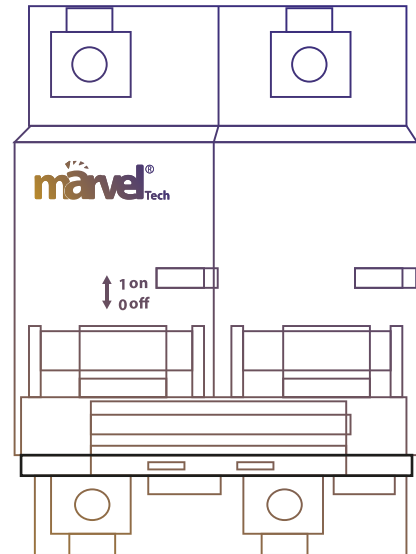
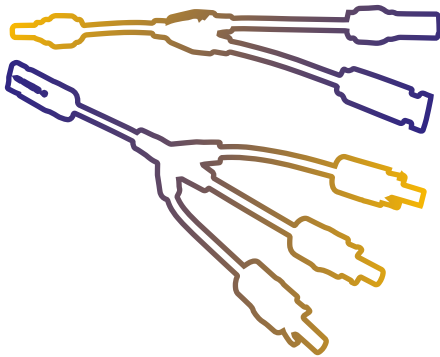


Router

MODEL	MDU-512	MDU-924	MDU-POE
output Voltage	5V-7.5V-9V-12V	9V-12V-5V-24V	9V-12V-5V-15V-24V
Battery type	Lithium		
Battery qty & Capacity	2600mAh*4		
N. W (Kgs)	0.375		0.4

SOLAR ACCESSORIES

**SOLAR CONNECTOR
CIRCUIT BREAKER
SURGE PROTECTIVE DEVICE
FUSE LINK**



**SCAN FOR MORE
INFORMATION**

SOLAR CONNECTOR

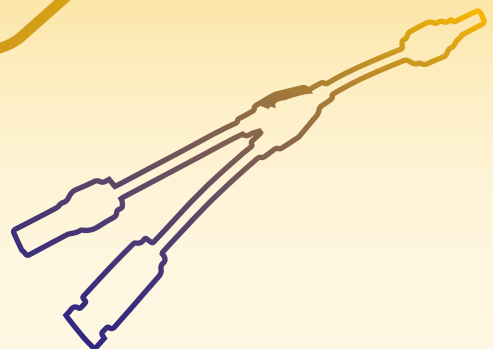
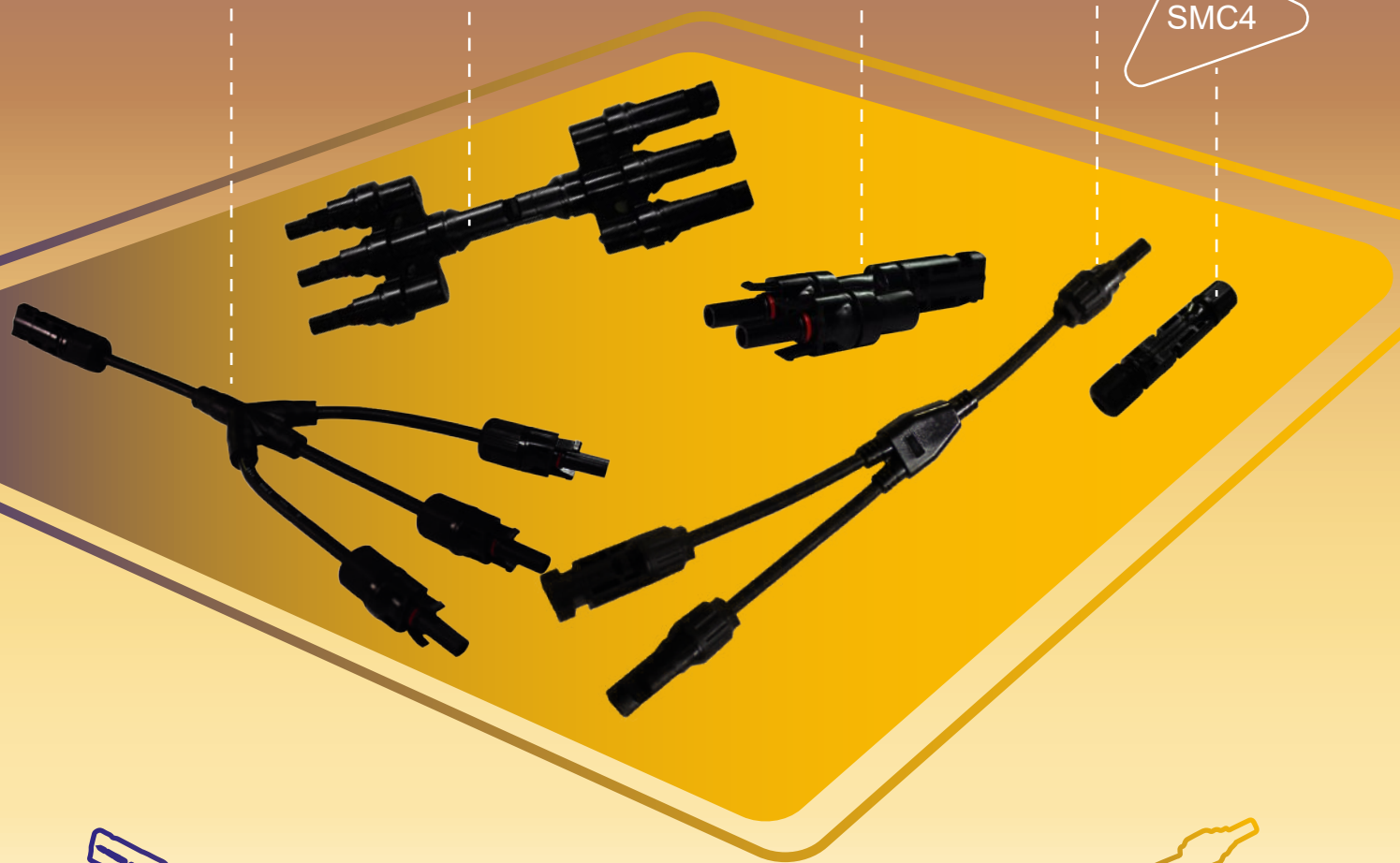
SMC4-Y-3-1

SMC4-T-3-1

SMC4-T-2-1

SMC-Y-2-1

SMC4

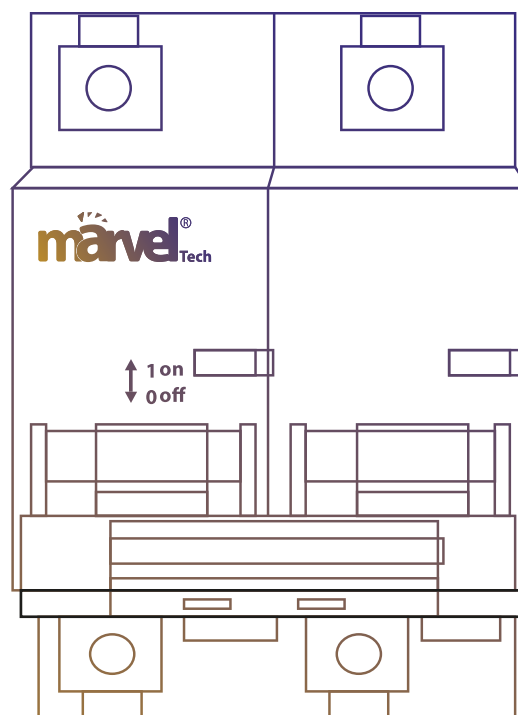


CIRCUIT BREAKER

- DC Circuit Breaker 1P
- DC Circuit Breaker 2P
- AC Circuit Breaker 1P
- DC Surge Protective 2P

Digital Circuit Breaker

- Fuse holder
- Fuse link

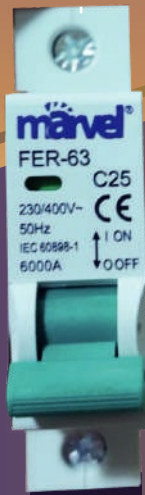


SCAN FOR MORE
INFORMATION

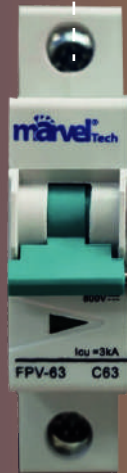
Fuse Holder



AC Circuit Breaker 1P



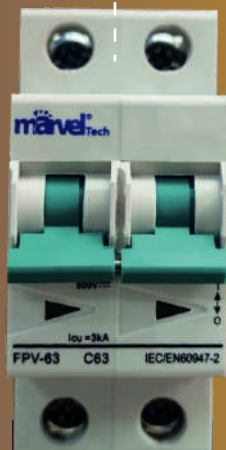
DC Circuit Breaker 1P



Fuse Link



DC Circuit Breaker 2P



Digital Circuit Breaker



DC Surge Protective 2P



PRODUCT	SPECIFICATION
AC Circuit Breaker 1P	1P 400VAC MCB, Rated Current In: 6, 10, 16, 25, 32, 40, 63 A
DC Circuit Breaker 1P	1P 250VDC MCB, Rated Current In: 10, 16, 20, 25, 32, 40, 50, 63, 100, 125 A
DC Circuit Breaker 2P	2P 10A 800VDC MCB, Rated Current In: 10, 16, 20, 25, 32, 40, 50, 63, 100, 125 A
Digital Circuit Breaker	Over&under voltage protection device with voltmeter 63A, 140~300V
DC Surge Protective 2P	2P 20-40KA SPD, 600/800VDC
Fuse Holder	1000VDC Fuse holder with LED
Fuse Link	1000VDC Fuse link, Rated Current In: 15, 20, 25, 30A

CONTACT US

▶ **Location:**

Office No: 302.

AL MURAR - 117, Street: 31a , Building No. 7.

Oops: San Marco Hotel .

Deira , Dubai , U.A.E.

▶ **Office Tel.:** +971 4 3867172

Mobil Nu.: +971 55 996 7655

▶ **Email:** info@marvel-battery.com

 www.marvel-battery.com

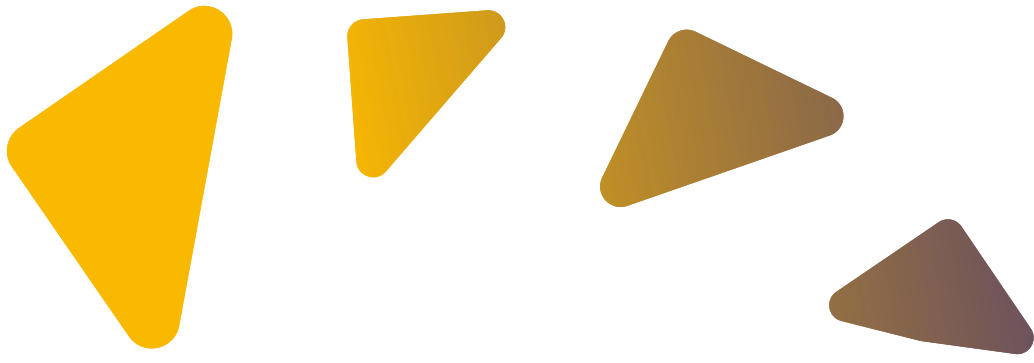
 **marvel**[®]
Tech

marvel[®] Tech

**YOUR
BEST
CHOICE**



THANK YOU
marvel team



2023
CATALOGUE

